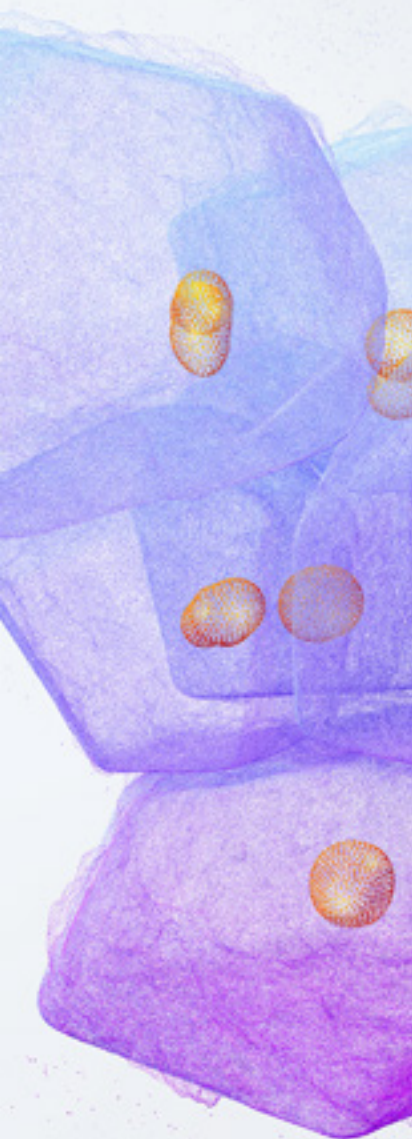


THE HUMAN CELL FORUM 2026

AGENDA



WELCOME

FRANCIS CRICK AUDITORIUM

- 9.00 Registration & refreshments
- 10.00 Welcome
Przemek Obloj
CEO, bit.bio
- 10.10 Opening address
Lord David Prior
Lazard
- 10.25 Accelerating the development and translation of new approach methodologies through the Queen Mary centre for predictive in vitro models
Professor John Connelly Queen Mary University of London
- 10.50 Establishing validity standards for iPSC modelling of neuropsychiatric disorders
Professor Anthony Vernon
King's College London
- 11.05 Cell identity and regulatory architecture: linking 3D genome organisation, multiomics and engineered human cells
Dan Turner, PhD, CTO
Enhanced Genomics

BREAK

- 11.30 Refreshments
- Poster session & image gallery
- Bricks of biology competition
Race the clock: Be the fastest to correctly build the brick-style neuron model. The quickest brain at the end of the day gets to keep the kit!

SESSION 1

FRANCIS CRICK AUDITORIUM

TRACK 1

Building in vitro models of neurodegeneration: Recapitulating human-specific pathogenesis in iPSC-derived cells

- 12.00 Autoantibody-driven synaptic impairment in cerebellar ataxia: Insights from in vitro systems
Professor Simone Mader
Director, Translational Immunology, University Hospital Erlangen

- 12.20 Validation of HTT CAG50 iPSC-derived neurons to support drug discovery in huntington's disease
Jovana Kovačević, PhD
Scientist Discovery, VectorY Therapeutics

- 12.35 A human iPSC model of tauopathies expressing 4R tau isoforms
Aurora Veteleanu, PhD
Neuroscientist, bit.bio

- 12.40 Tau aggregation at synapses
Professor Sir David Klenerman
University of Cambridge

ROSALIND FRANKLIN PAVILION

TRACK 2

From research to regulation: Validating hiPSC-derived platforms for toxicity and liability assessment

- 12.00 Regulatory-Ready NAMs: advances in hiPSC-cardiomyocyte and neural MEA assays
Mike Clements, PhD
SVP Scientific Partnerships & Strategy Axion BioSystems

- 12.20 Building a predictive structure activity relationship (SAR) tool to help avoid ion channel related central nervous system liability in novel compounds
Louisa Zolkiewski, PhD
Postdoctoral Research Scientist, Apconix

- 12.35 From action potentials to organoids: A unified optical platform for multi-modality safety pharmacology in human iPSC models
Hamed Ghazizadeh, PhD
Sr. Business Development Manager Curi Bio Inc.

- 12.40 Development of human iPSC-derived hepatocytes for drug discovery, translational research and toxicity testing
Sabitri Ghimire, PhD
Senior Scientist II, bit.bio

BARBARA MCCLINTOCK PAVILION

WORKSHOP SESSIONS

- 12.00 Mastering cell culture: Troubleshooting your biggest hurdles in iCells adherence, morphology, and counting

LUNCH

BARBARA MCCLINTOCK PAVILION

WORKSHOP SESSIONS

- 14.00 Workshop series featuring top tips for applying human iPSC-derived cells in ICC, FACs, multi-cell cultures and transfection

SESSION 2

FRANCIS CRICK AUDITORIUM

TRACK 3

Engineering complexity: hiPSC-derived NAMs for neurodegenerative disease

- 14.00 Complex hiPSC models to investigate novel mechanisms and therapeutic efficacy in alzheimer's disease
Katerina Gospodinova, PhD
Neuroinflammation Team Lead
Alzheimer's Research UK Oxford Drug Discovery Institute (ARUK-ODDI) University of Oxford

- 14.15 Advancing functional characterization of in-vitro neural models with next generation electrophysiology
Tom Dufor, PhD
Field Application Scientist, Maxwell

- 14.20 Development of advanced 3D models for neuroscience drug discovery
Matthieu Trigano, PhD
Medicines Discovery Catapult

- 14.35 A human 3D neuroinflammation model using BrainZell organoids with integrated bit.bio ioMicroglia
Robin Pronk, PhD
Co-founder & CSO BrainZell

- 14.40 Patient iPSC-derived brain MPS to model gene by environmental interactions in neurological disorders
Dowlette-Mary Alam El Din, PhD
Postdoctoral Fellow Center for Alternatives to Animal Testing
Johns Hopkins University

- 15.00 Building better brain models: optimized iPSC-derived neuronal and microglial live-cell assays
Jasmine Trigg
Senior Scientist Sartorius

ROSALIND FRANKLIN PAVILION

TRACK 4

Advancing drug discovery: High-throughput screening and functional genomics in hiPSC-derived cells

- 14.00 Modeling TDP-43 proteinopathy in human iPSC-derived motor neurons captures mislocalization and loss of function
Elodie Chevalier, Senior Research Scientist & Marjorie Decroux, Senior Research Assistant, AC Immune

- 14.15 CRISPR screens in human iPSC-derived neurons and glia for target identification and validation
Alex Armesilla, PhD, Senior Portfolio Manager Custom Services, bit.bio

- 14.20 MY014: Developing an intrabody-based gene therapy for TDP-43 proteinopathies
Nikole Zuñiga Quiroz, PhD
Senior Scientist Neurobiology
Mabylon AG

- 14.35 Working with the MRC-AstraZeneca-university of Cambridge functional genomics screening laboratory
Nicola McCarthy, PhD
Head of Research, Milner Therapeutics Institute

- 14.40 Signature-guided, phenotype-driven drug repurposing in familial Alzheimer's disease models from human iPSCs
Amina McDiarmid, PhD
Postdoctoral Research Fellow
University of Edinburgh

- 14.55 A step toward reproducible cell culture with hamilton
Shannon Crow, Territory Sales Manager, Hamilton Sales, and Service UK.
& Adam Hill, Scientist, bit.bio

BREAK

- 15.05 Refreshments

SESSION 3

FRANCIS CRICK AUDITORIUM

- 15.30 Lightning talks

- 16.00 Human iPSC-derived neurons for neurotherapeutic discovery and development
Hassan Al Ali, PhD, MSM
Associate Professor, Neurosurgery & Medicine, University of Miami, Director, Drug Discovery Centre, The Miami Project to Cure Paralysis

- 16.30 Fireside chat
Professor Julie Frearson
Corporate Senior Vice President & Chief Scientific Officer Management, Charles River

- 16.50 Panel discussion: Moving beyond the gold standard: Can NAMs outperform traditional models?
Ross Dobie, PhD
Head of Science at The Centre for Human-Specific Research;
Eric Hill, PhD
Reader at Loughborough University;
Pelin Candarlioglu, PhD
Director at 3D and 3Rs
Professor Julie Frearson

AWARDS AND CLOSING

- 17.20 Poster winner, image winner and fastest builder

DRINKS RECEPTION